



**Miis** [www.miis.com.tw](http://www.miis.com.tw)

Medical Imaging Innovation Solution Provider

# Digital Eye-Fundus Scope

Wide angle FOV 45°, 5M pixels image



## horus SCOPE



### 3.5" touch screen



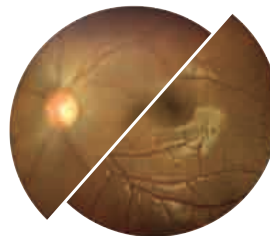
3.5" screen is perfect for image capturing and reviewing, yet without sacrificing the mobility. The touch screen provides the portable fundus camera with a more intuitive user interface.

### 7 internal fixation points



Visual fixation points in the system enable the patient to fix where to look at and 7 fixation points can photographically cover a larger retina area up to 80°.

### Auto focus and power focus



Employing the auto focus feature, retina image capturing is easier and more sufficient. If there are certain cases required stepping focus, Horus scope can still fulfill your needs with power focus.

### UVC mode (Dual-screen)



Horus scope supports real time dual screens experience with an external USB cable to connect the device and a PC/ laptop. Utilizing UVC, tele-ophthalmology for eye screening over Internet is accessible.

### More



Wi-Fi compatible



AV cable compatible



Multi-image modes: color/ Red-free/ IR mode



3 hours operation



Foot switch compatible



ISO-10940 fundus camera standard

# Horus+ Scope DEC 200, Digital Eye-Fundus Camera



Clinics



Ward round



Pediatrics



Emergency



Telemedicine



Education



Veterinary

## Specification



Field of View	View Angle 45 degree
Focus Range	Auto Focus / Manual Focus -20D~+20D
Dimension	20.90 cm* 9.00 cm* 20.30 cm
Weight	500 grams
Optical Source	Natural white light emitting diode (LED) or infrared LED
Pupil Size	3.5 mm (minimum pupil size for non-mydratiac operation)
Camera Resolution	5M pixels (2592*1944)
Display	3.5" full color TFT-LCD Touch Panel
Fixation Targets	7 internal fixation targets
Operating Distance	24 mm
Interface	Mini USB and AV output
Image Format	JPEG (Photograph) and H.264 (Video)
Dynamic Video Output	Composite AV out or USB live video enable
File storage	SD card , Supports 2GB to 32GB by FAT32 Format
Power Supply	Rechargeable Lithium Battery
Power Adapter Source	Input :100~240 VAC, 50/60 Hz , 0.3A Output: 5V DC, 2A
Charger Station Input	5V DC, 1.2A
Charging Time	5 Hours
Operating Time	3 Hours at 2.5 watt condition
Accessories	Foot-Switch, Slit Lamp Jig, Table mount module (Chin-Rest+Metal Base) Review Software, Wireless transmit adapter

All information is for reference. Information contained in this leaflet is subject to change without prior notice.



Medical Imaging Innovation  
Solution Provider

**MiiS**

Tel +886 3 579-8860/ Fax +886 3 579-8821  
Address 30076, 1F, No.7, R&D Rd. II,  
Hsinchu Science Park, Hsinchu, Taiwan  
Website [www.miiis.com.tw](http://www.miiis.com.tw)  
Email [sales@miiis.com.tw](mailto:sales@miiis.com.tw)



MiiS, an expert in digital diagnostic scopes  
Digital otoscope / Digital dermatoscope /  
Digital endoscope / Digital ophthalmoscope  
For more information, please visit our website.