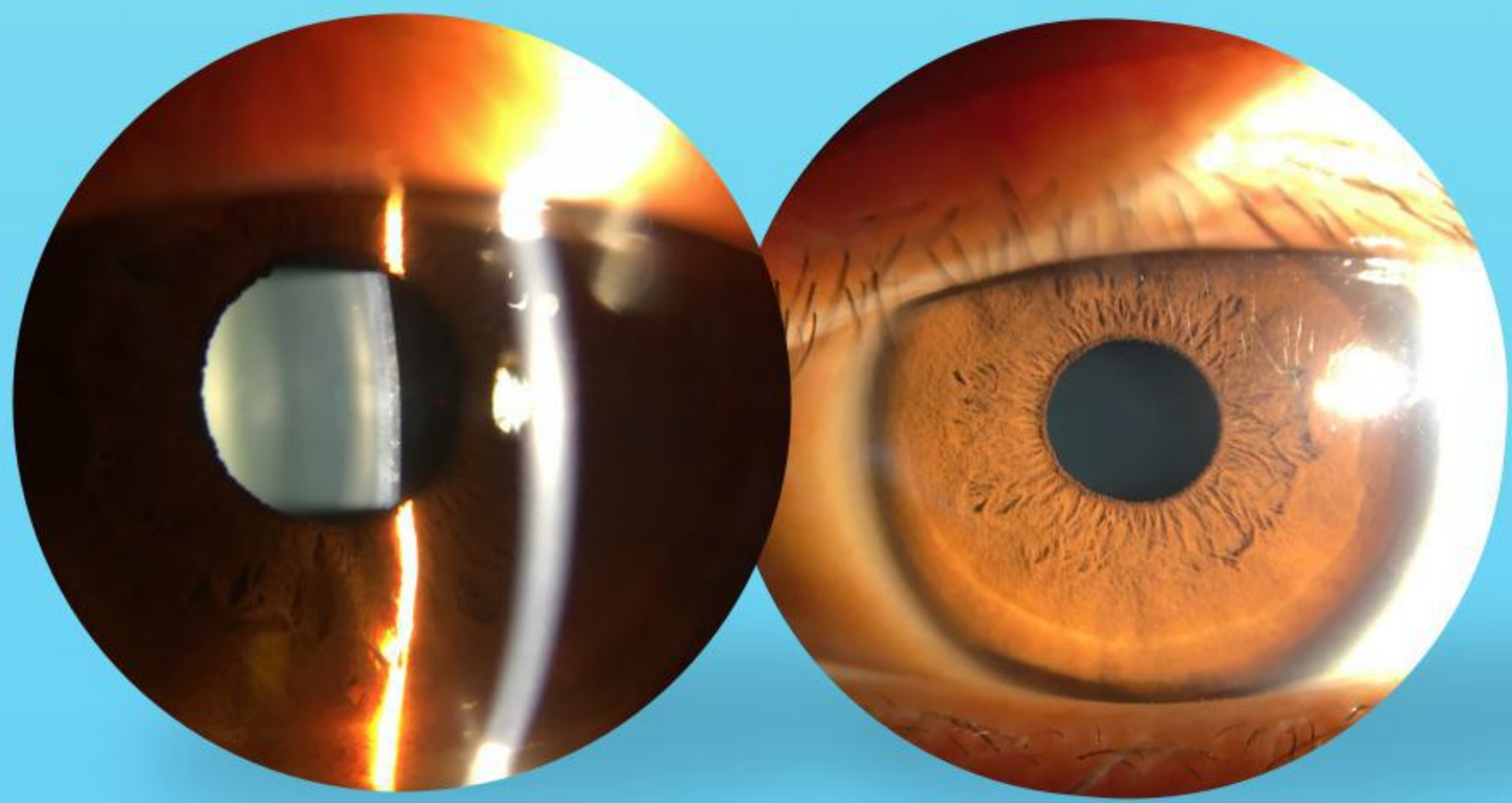


# PORTABLE SLIT LAMP LS-1A/B







### ◆ EXCELLENT OPTICAL QUALITY

Especially fit for children, ward round, screening

### ◆ BIG SLIT ANGLE

Illumination angle max. up to be 60°, can get better slit view for cornea etc.

### ◆ WIDE VISUAL FIELD

50% higher field of view than traditional design and a wider observation range

### ◆ ONE-HAND OPERATION

Easily adjust observation magnification during the inspection, help doctors quickly find the lesion in a larger field of vision and transfer to a higher magnification for better observation

### ◆ WARM LED

Warm light for better clinical observation of eye tissues and LED light source for longer and safer use

### ◆ SPECIFICATION

Magnification	LS-1A:10X LS-1B:10X/16X
Working Distance	80mm(16X) 100mm(10X)
Field of View	ø10mm(16X) ø15mm(10X)
Interpupillary	49-75mm
Diopter Adjustment	±7D
Slit Size	0.1mm*12mm 0.2mm*8mm 0.8mm*12mm
Spot Size	ø1 / ø5 / ø12mm
Slit Angel	Horizontal, ±60°
Filter	Neutral Density Red-free Cobalt Blue
Light Resource	Warm LED
Illumination control	Continuously Adjustable
Battery Type	2 AA batteries
Operating Time	≥4 Hours
Dimensions	320*310*205mm
Net Weight	Approx. 835g



**ChongQing Sunkingdom Medical Instrument Co., Ltd.**

Head office: Room 12, Floor 10, Block A of China Resource Center. Jiulongpo District, Chongqing 400050, China.

FAX: +86 23 68102793

Tel: +86 23 68643990

E-mail: sales@cqsunkingdom.com

URL: en.cqsunkingdom.com