

VX 25

Save space and
perform accurate
refractions



Space-saving chart solution

Used within the Eye Refract™ system and the VX 65, this screen has been designed for optimal results, thanks to its ergonomic design, streamlined style, and large number of tests included.



Pair with the EyeRefract™ A.I. powered binocular physiological refraction system or the VX 65 digital phoropter to achieve accurate refractions.

1

Minimum distance and space needed

- 5 m refraction at 80 cm
- Only 1m² needed
- No obligation for a standard projection or with inverted mirrors.



2

Ensure patient's comfort

- Comfortable patient experience
- Almost natural conditions, projection to infinity minimizes the accommodation.
- High contrast and natural head position.

3

Ensure operator efficiency

- The space saving chart has its own environment / independent lighting
- Standard and regular tests (regular spacing between letters)
- Effective anti-reflection coating, black matte screen

4

Advanced software

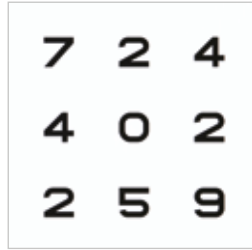
- Wider selection of tests
- Regular software updates



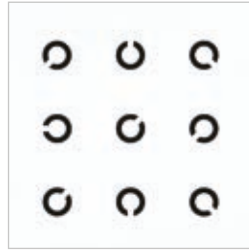
Large range of optotypes and tests



Letter



Digit



Landolt's rings



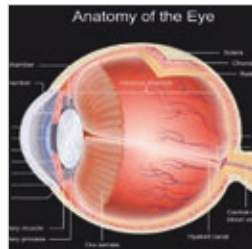
Snellen



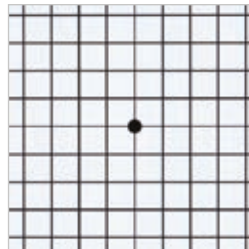
Kids



Geometric



Learning Pic



Amsler



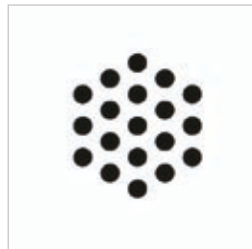
Sheridan



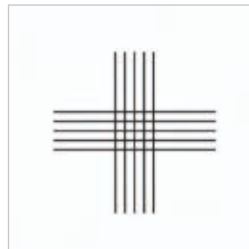
ETDRS



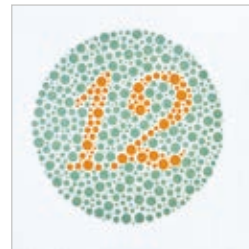
Astigmatism



Dot chart



Jackson Cross



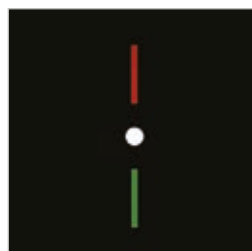
Ishihara



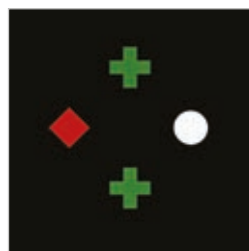
Kids Movie



Red green balance



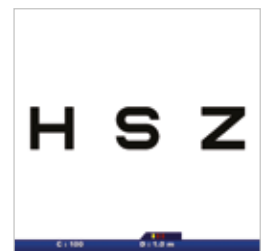
Fusion



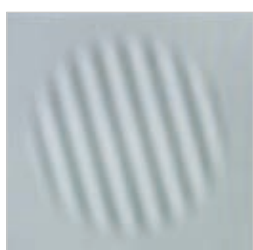
Worth tests



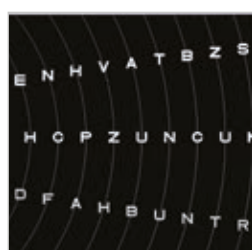
Schober test



Pelli Robson



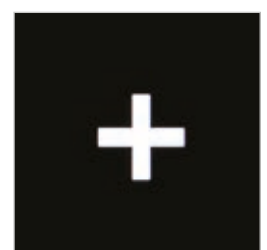
Regan test



Dazzle halo



Dazzle driver



Dazzle recap

Technical specifications

DIMENSIONS:

| | |
|---------|----------------------------------|
| WIDTH | 320 mm (12.6 in) |
| DEPTH | 315 mm (12.4 in) |
| HEIGHT | 660 mm (26 in) |
| WEIGHT | 28 kg (61.7 lbs.) |
| VOLTAGE | 110V-240V AC, 50/60 Hz, 50 VA |

The VX 25 is compliant with the following directive and standards:

- Directive 93/42/CE, amended by Directive 2007/47/CE: the VX 25 is classified as Class I CE
- Date of first marking: 01/2019
- Product life time: 5 ans
- IEC60601-1 (ed.3.1.): Medical electrical equipment- Part 1: General requirements for basic safety and essential electrical safety performance.
- IEC60601-1-2 (ed.4.): Medical electrical equipment- Part 1-2: General requirements for safety – Collateral standard: Electromagnetic compatibility
- ISO 8596:2017: Ophthalmic optics - Visual acuity testing- standard optotype and presentation
- ISO 10938:2016 Ophthalmic optics – Chart displays for visual acuity measurement – printed, projected and electronic

Space saving chart

| | |
|------------------------------------|--|
| Screen type | LCD 1920x1200 pixels |
| Size | 7" LCD (color) High resolution Monitor |
| Maximum contrast | 1000/1 |
| Luminance | 250 cd/m ² |
| Reading distance | 5 meters |
| Visual acuity range | 0.1 to 2.0 - 20/500 to 20/10 |
| VX 25 power supply | 100-240V CA - 50/60 Hz - 1.3A |
| Screen power supply | 12 V DC |
| Consumption | Max 60W |
| Protection against electric shocks | Class I |
| IP classification | IPX0 |
| Connections with phoroptors | RS232-C or IR or wifi |
| Sound output | Sound output jack 3.5 mm |

Space saving chart

| | |
|-------------------|--|
| Number of buttons | 48 |
| Power supply | LR03 AAA 1,5V batteries (x2) |
| Dimensions | 185 (length) x 47 (width) x 20 mm (height) |
| Weight | 80 g (Without batteries) |



INNOVATION TO UNLOCK YOUR POTENTIAL

LUNEAU TECHNOLOGY SAS

2 Rue Roger Bonnet, 27340 Pont-de-l'Arche - France
Tél. + 33 232 989 132 - Fax + 33 235 020 294
contact@visionix.com

www.visionix.com