

VX 90

Simplified
measurement,
precise results



ARK with auto fog system

The VX 90 is an ophthalmic diagnostic device with refraction, keratometry, and corneal radius functionalities. A moving fixation target with auto fogging minimizes accommodation to obtain the most precise reading.

- Specifically move the fixation target for peripheral keratometry
- Tilttable LCD
- Alignment Indicators
- Printer: Easy Load Paper function and automatic cutting
- Motorised Chinrest
- One-Touch Lock
- WIFI connectivity and EMR integration



Automatic and simple

The VX 90 obtains three primary measurements:



1

Objective refraction

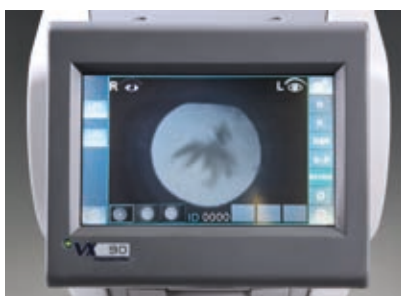
- The objective refraction includes sphere, cylinder, axis, and pupillary distance.



2

Keratometry

- Central
- Peripheral



3

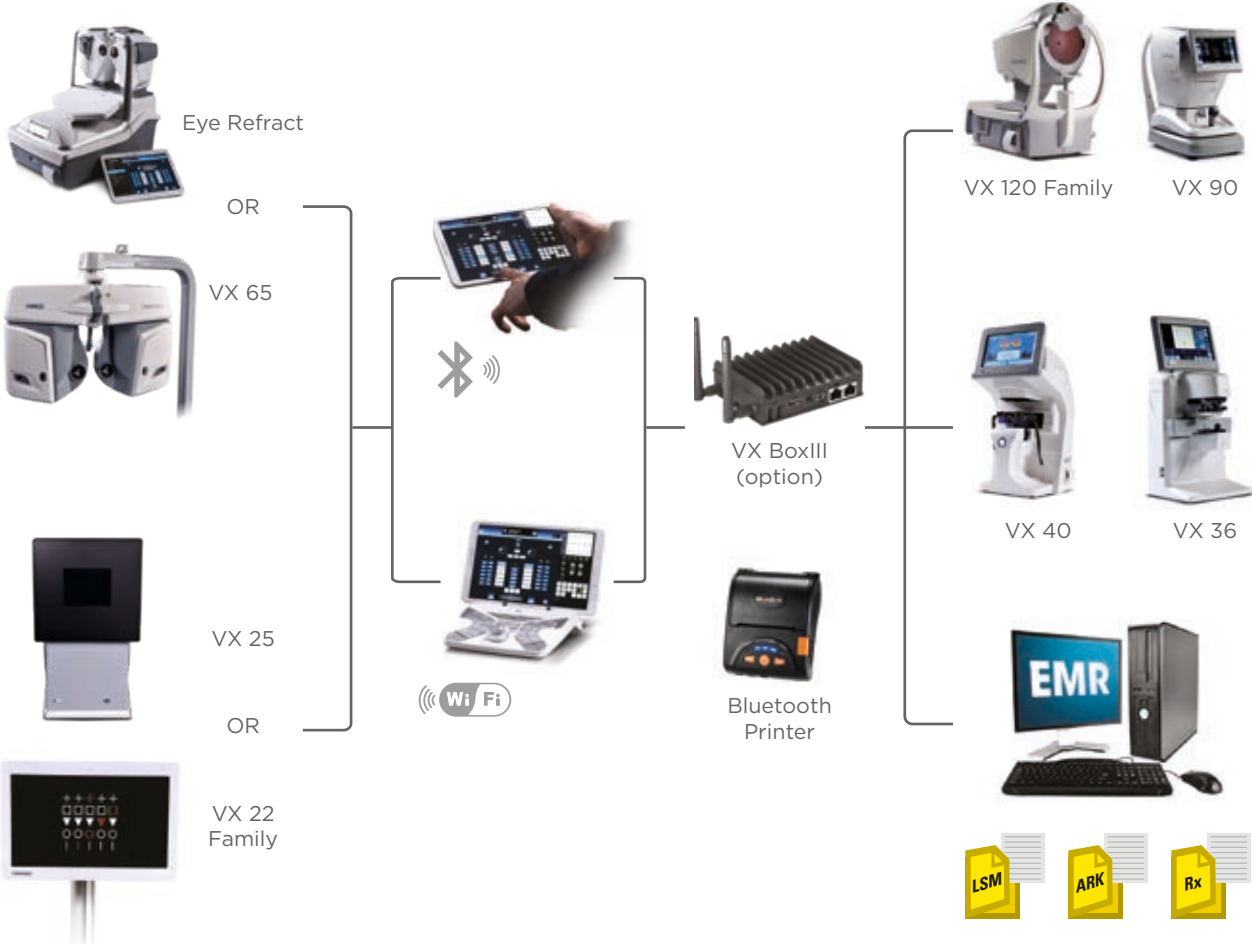
Lens opacity detection

- The backlighting feature allows for illumination of lens opacities.

Integrate with the Visionix suite of equipment and EMR*

- Full data management dashboard to manage your data from external devices (EMR/ARK)
- Import data wirelessly from other devices (such as AR/K and lensometers) via VXbox
- Export refraction data into your EMR system at the touch of a button

* Electronic medical reports



Technical specifications

DIMENSIONS:

WIDTH	288 mm (11.3 in)
DEPTH	500 mm (19.7 in)
HEIGHT	480 mm (18.9 in)
WEIGHT	14 kg (30 lbs.)
VOLTAGE	110V-240V AC, 50/60 Hz, 50 VA
STANDARDS	CE0120 CLASSE 1M

Compliance with
Medical Device Directive 93/42/EC

General

Target Fixation	Auto fog system
Measurement data display	7" TFT colour LCD with touch screen (800x480)
PD Measurement	85 mm measuring range max, 1 mm display unit
Measurement data recording	Built in thermal printer
External output terminal	RS232/WIFI

Measurable range

Power Range	-20 D to +20 D
Power Accuracy	+/- 0.25 D
Astigmatism range	0 to 10D
Astigmatism accuracy	0.25 D
Axis range	0° to 180°
Axis step	1°
Axis accuracy	+/- 5°
Pupil diameter measured	2,5 mm minimum

Keratometry specifications

Corneal radius range	5 mm to 10 mm
Corneal refractory power	33D to 67D (n=1.3375)
Power repeatability	0.03 mm
Corneal astigmatic power	0 to 12 D
Astigmatism accuracy	0.02D
Axis range	0° to 180°
Axis step	1°
Axis accuracy	+/- 5°
Measurement diameter	2 mm to 12 mm
Peripheral keratometry	Nasal, temporal, up, down



INNOVATION TO UNLOCK YOUR POTENTIAL

LUNEAU TECHNOLOGY SAS

2 Rue Roger Bonnet, 27340 Pont-de-l'Arche - France
Tél. + 33 232 989 132 - Fax + 33 235 020 294
contact@visionix.com

www.visionix.com