

BlephEx[®]

Healthy Lids for Life!



Dry Eye Blepharitis Syndrome (DEBS) Treatment Algorithm



STAGE ONE - FOLLICULITIS

CLINICAL APPEARANCE:

- Edema/swelling around base of the eyelashes
- Noticeable white dots around the base of the lash in African Americans

SYMPTOMS:

Asymptomatic, foreign body sensation, itching, burning

TREATMENT:

BlephEx® debridement which:

- Removes the bacterial biofilm from the lid margin surface and around lashes
- Disrupts lid margin bacterial biofilm near meibomian glands thereby slowing the spread and encroachment down the meibomian gland ductules
- Prevents further damage to lid structures



STAGE TWO - MEIBOMITIS

CLINICAL APPEARANCE IN ORDER OF SEVERITY:

- Frothy or sudsy appearance to meibum due to lipase saponification of lipid
- Creamy dots of meibofilm occupy the meibomian ductules = occlusion
- Early inflammation evidenced by telangiectatic vessels, corneal/conjunctival staining
- Domes of meibofilm attempting to exit meibomian gland, trapped by surface bacterial biofilm
- Obvious redness and inflammatory changes along posterior lid margin

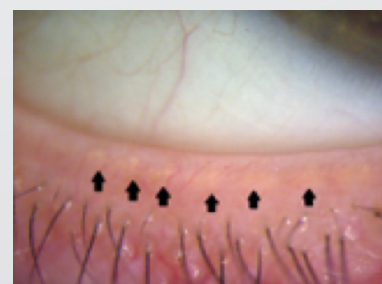
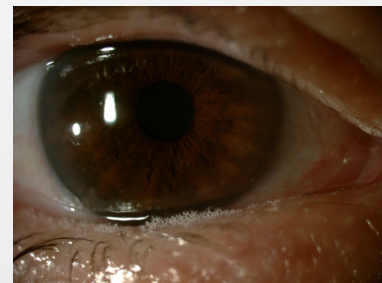
SYMPTOMS:

Itching, burning, foreign body sensation, hazy fluctuating vision, dryness, tearing

TREATMENT:

BlephEx® to remove surface bacterial biofilm, followed by:

- Surface heat with manual expression of meibofilm, followed by Thermal Expression (manual or mechanical) therapy to express meibofilm
- Optional nutraceuticals
- Optional temporary anti-inflammatory agents if needed



STAGE THREE - LACRIMALITIS/AQUEOUS INSUFFICIENCY

CLINICAL APPEARANCE:

Lid laxity, Ectropion, Entropion

SYMPTOMS:

Profound dryness, poor vision, lash loss, reflex tearing due to lash irritation, may report no symptoms due to inflammatory neuropathy of lids and cornea

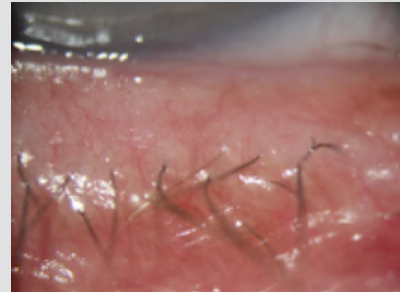
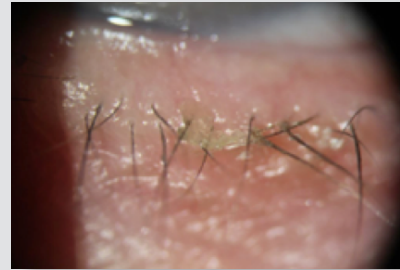
TREATMENT:

BlephEx® to remove surface bacterial biofilm, followed by:

- Thermal expression (manual or pulsation) to express meibofilm
- Optional nutraceuticals, Omega-3
- Optional temporary anti-inflammatory agents

if needed

- Optional artificial tears as needed



STAGE FOUR - LID DESTRUCTION

CLINICAL APPEARANCE:

Lid laxity, Ectropion, Entropion

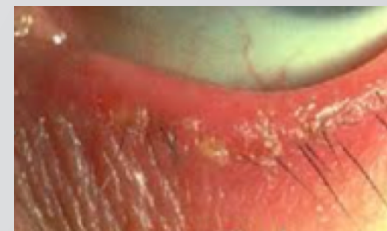
SYMPTOMS:

Profound dryness, poor vision, lash loss, reflex tearing due to lash irritation, may report no symptoms due to inflammatory neuropathy of lids and cornea

TREATMENT:

Blephex® to remove surface bacterial biofilm, followed by:

- Thermal expression (manual or pulsation) to express meibofilm
- Optional anti-inflammatory agent
- Surgery to correct lid apposition to globe
- Optional artificial tears as needed





Healthy Lids for Life!



(800) 257-9787 • BlephEx.com

© BlephEx®, LLC. 10.2018